

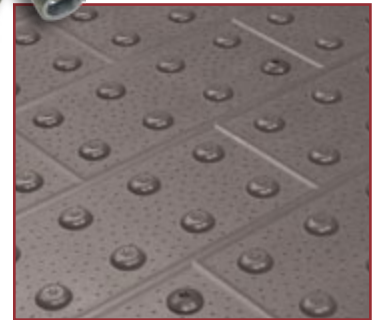
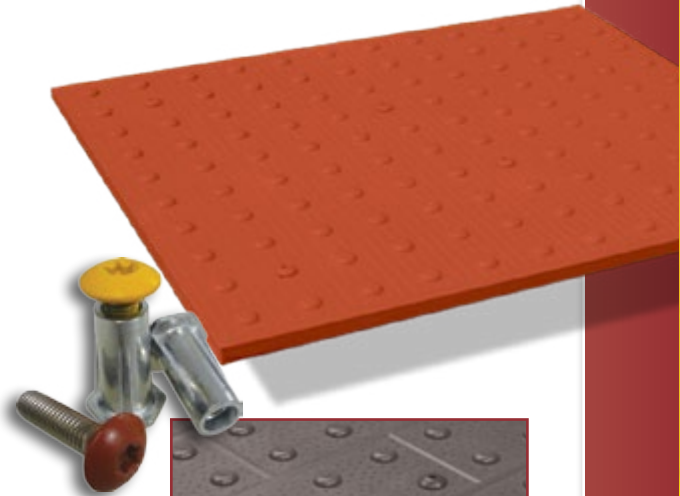
EZ Set Tile™

heavy duty replaceable cast-in-place detectable warning

The replaceable cast-in-place EZ Set Tile is an incredibly strong, double-reinforced polymer concrete composite. At ½" thick with a stainless steel anchoring system, the EZ Set Tile installs in less than 5 minutes.

Features

- **Superior durability** – all season product ideal for high wear conditions such as transit platforms and shopping cart areas
- **All weather performance** – hot and cold climate superiority
- **Flat surface on bottom** – easy installation, sits flush on concrete substrate
- **Replaceable** – removal and replacement in minutes without the need for reconstruction
- **EZ Set Elite** – Continuous brick pattern for architectural aesthetics, replaceable and the same physical characteristics as EZ Set Tile



EZ Set Elite™
Brick Surface Pattern

Installation



Install anchors, press tile into wet concrete.

Physical Characteristics

- **Compression Strength** - 16,000 psi
- **Tensile Strength** - 2,083 psi
- **Dome Spacing** - 2.35" Center to Center
- **Slip Resistance** - 1.05
- **Modulus of Elasticity** - 1,470,000 psi
- **Color** - Integral Throughout

Colors



Safety Yellow



Brick Red



Charcoal Gray

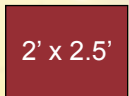


Safety Red

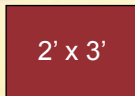
Sizes



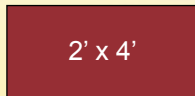
2' x 2'



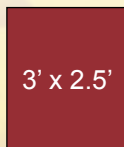
2' x 2.5'



2' x 3'



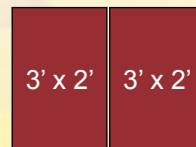
2' x 4'



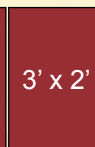
3' x 2.5'



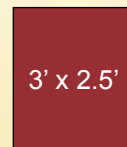
6', 8', 10', 12', 15'
radius



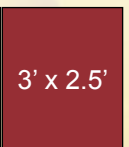
3' x 2'



3' x 2'



3' x 2.5'



3' x 2.5'